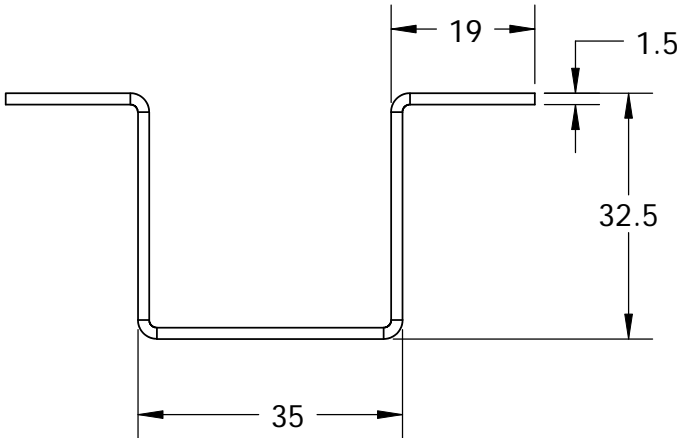
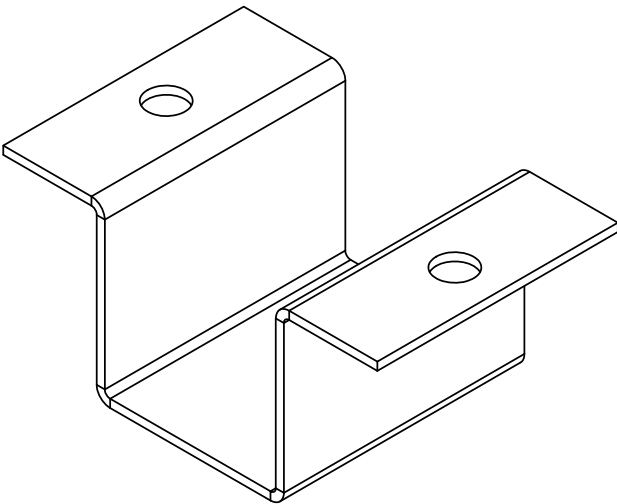
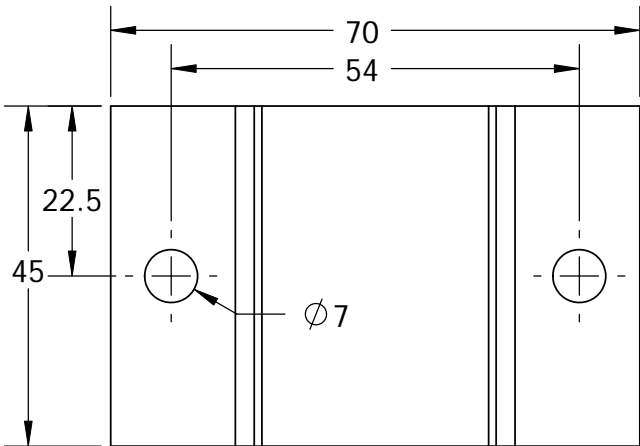


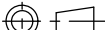

Part 2



默认公差表	
冲孔直径	±0.10
冲切到冲切	±0.15
冲切边到折弯	±0.25
冲切特征到折弯	±0.25
冲切特征到压平折弯	±0.40
压平折弯	±0.50
孔到折弯	±0.25
折弯到折弯	±0.40
2X 折弯到折弯	±0.50
3X 折弯到折弯	±0.80
4X 折弯到折弯	±1.0
每增加一个折弯	增加0.25
折弯角度	±2° 每个
平面度	0.15每25.4x25.4

PENTAIR RESTRICTED
THIS DOCUMENT AND ANY ASSOCIATED DATA
CONTAIN RESTRICTED INFORMATION.
DO NOT DISCLOSE TO OR DUPLICATE
FOR OTHERS EXCEPT AS AUTHORIZED BY PENTAIR

	Date	Name
Approved by	4/20/2012	Jochen
Designed by	4/20/2012	Billy
Drawn by	4/20/2012	Billy
Checked by	4/20/2012	Neil

Project Name: Casco 2.4G			Finish: None			
Scale: 1:1		Material: SUS 304				
Description: CASCO 888 DCS BRACKET FROM JINGFU					SOLIDWORKS DKS	
Drawing Number: F020000006			Sh 2	Pg 2	THIRD ANGLE PROJECTION	
REF NO		MASS (kg)		REV B		Pentair Technical Products China